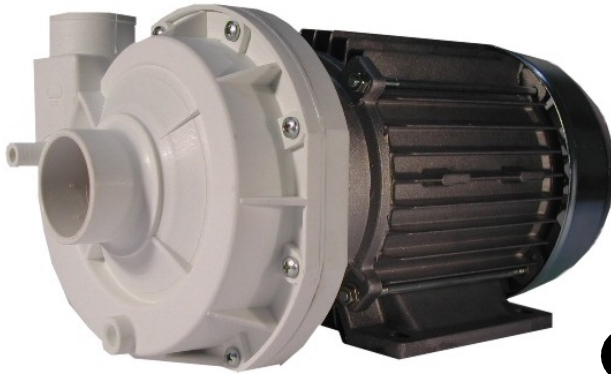




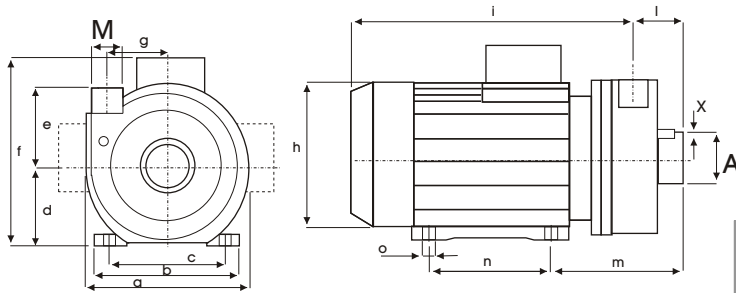
FM 4023

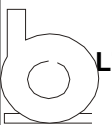

kW 0.64
Hp 0.87

Hm 9.5 max
L/1' 335 max

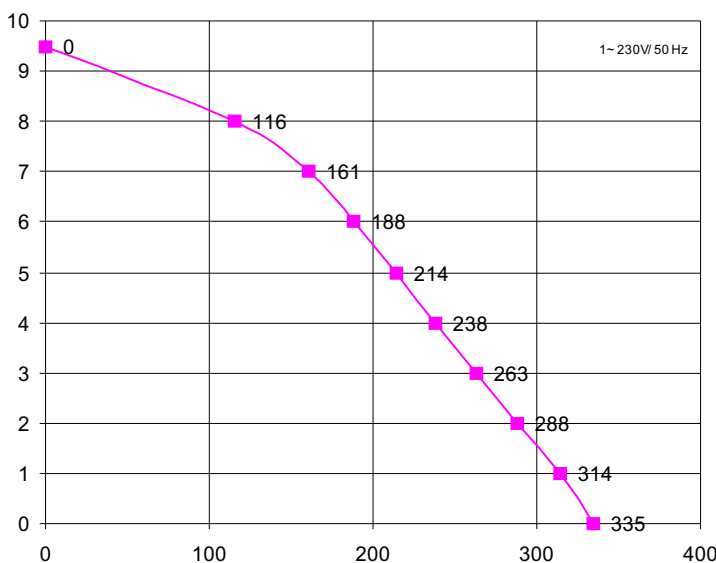


Corpo Pompa Pump Body Pumpengehäuse	PP 30 GF
Girante Aperta Open Impeller Offenes Laufrad	SPS G30
Albero Motore Motor Shaft Motorwelle	AISI 416
Tenuta Meccanica Mechanical Seal Gleitringdichtung	GRAFITE/CERAMICA CARBON/CERAMIC KOHLE/KERAMIK



SX	A	M	DX	A	M
 L7:	45	40	 L7:	45	40

mod	a	b	c	d	e	f	g	h	i	l	m	n	o	x	kg
FM4023	190	140	112	71	75	145	57	142	246	44	129	90	8	12	7,0



Hm	0	1	2	3	4	5	6	7	8	9,5
L / 1'	335	314	288	273	254	232	210	186	123	0

Potenza motore Motor power Motor Leistung	Hp kW 0,86 0,64
Tensione/Frequenza Tension/Frequency Spannung/Frequenz	1-V/Hz 230/50
Corrente assorbita Power consumption Stromaufnahme	A 3,26
GPM RPM UPM	2800
Condensatore Capacitor Kondensator	16 µF
Protezione termica Thermal Overload Überlastschutz	155 °C
Classe isolamento Insulation class Isolationsklasse	F
Grado protezione Protection class Schutzklasse	IP 44
Servizio Duty Betriebsart	S1 CONTINUO CONTINUOUS DAUERBETRIEB

REVISIONE N.03/03 P03-153/01

Ci riserviamo il diritto di apportare modifiche tecniche
We reserve the right of technical modifications
Technische Änderungen vorbehalten