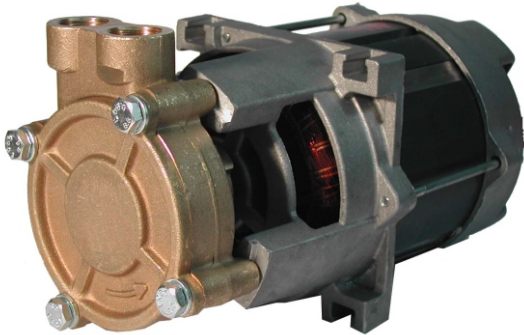


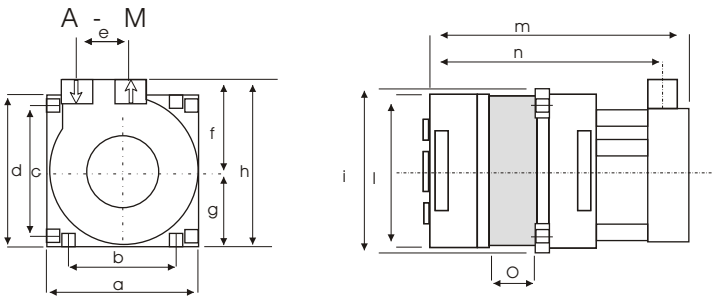


PS 46

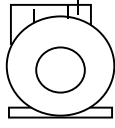
kW 0.27 Hm 38.0 max
Hp 0.36 L/1' 32.5 max



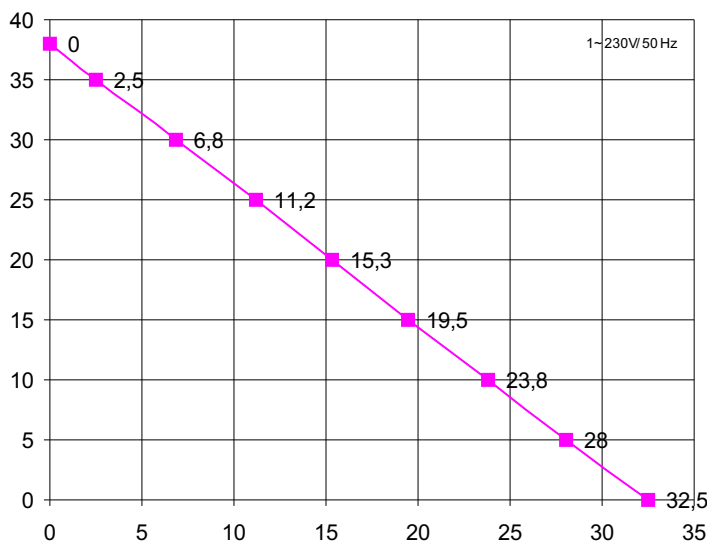
Corpo Pompa Pump Body Pumpengehäuse	OTTONE OT 58 BRASS 58 MESSING MS 58
Girante a Turbina Turbine Impeller Turbinen Laufrad	OTTONE OT 58 BRASS 58 MESSING MS 58
Albero Motore Motor Shaft Motorwelle	AISI 303
Tenuta Meccanica Mechanical Seal Gleitringdichtung	GRAFITE/CERAMICA CARBON/CERAMIC KOHLE/KERAMIK



DX	A	M
F1:	3/8"	3/8"



mod	a	b	c	d	e	f	g	h	i	l	m	n	o	p	q	r	kg
PS 46	95	63	77	95	25	57,5	49	106	102	92	188	168	54	-	-	-	4,2



H m	0	5	10	15	20	25,0	25	30,0	32
L / 1'	32,5	28	23,8	19,5	15,3	11,2	6,8	2,5	0

Ci riserviamo il diritto di apportare modi fiche tecniche.
We reserve the right of technical modifications.
Technische Änderungen vorbehalten.

Potenza motore Motor power Motor Leistung	Hp kW	0,61 0,45
Tensione/Frequenza Tension/Frequency Spannung/Frequenz	1-V/Hz	230/50
Corrente assorbita Power consumption Stromaufnahme	A	1,23
GPM RPM UPM		2800
Condensatore Capacitor Kondensator		10 µF
Protezione termica Thermal Overload Überlastschutz		155 °C
Classe isolamento Insulation class Isolationsklasse		F
Grado protezione Protection class Schutzklasse		IP 00
Servizio Duty Betriebsart	S6	INTERMITTENTE INTERMITTANT KURZZEITIG

REVISIONE N.03.01/03