



# PMO 45

kW 0.36 Hm 38.0 max  
Hp 0.48 L/1' 32.5 max

N.B.:  
Questa pompa corrisponde al tipo  
PMC 45 del precedente catalogo.  
This pump corresponds to type  
PMC 45 of the old catalogue.  
Diese Pumpe entspricht der Type  
PMC 45 des alten Katalogs.

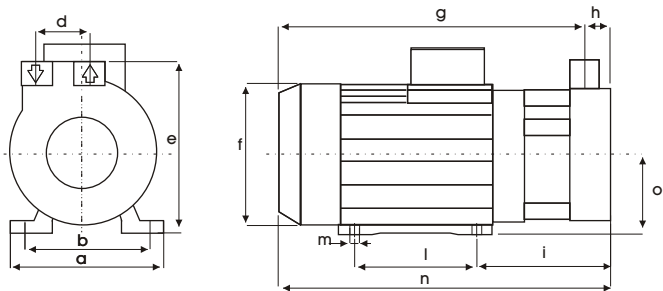


<b>Corpo Pompa</b> <i>Pump Body</i> Pumpengehäuse	<b>OTTONE OT 58</b> <b>BRASS 58</b> <b>MESSING MS 58</b>
<b>Girante a Turbina</b> <i>Turbine Impeller</i> Turbinen Laufrad	<b>OTTONE OT 58</b> <b>BRASS 58</b> <b>MESSING MS 58</b>

<b>Albero Motore</b> <i>Motor Shaft</i> Motorwelle	<b>AISI 430 F</b>
--	-------------------

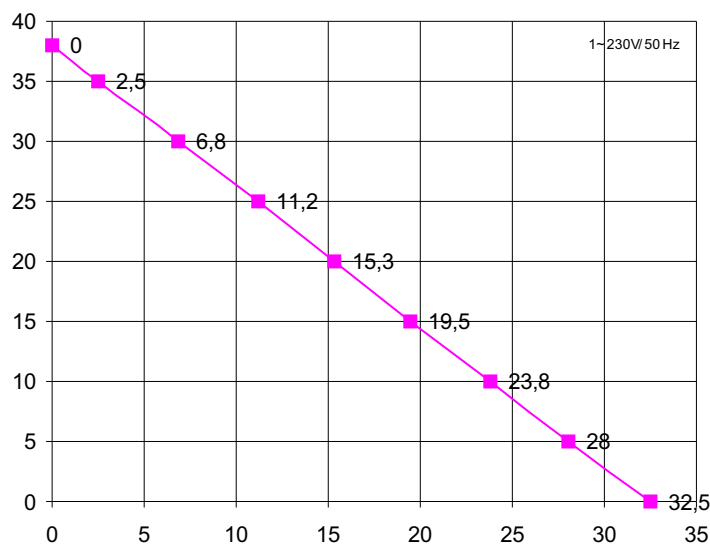
<b>Tenuta Meccanica</b> <i>Mechanical Seal</i> Gleitringdichtung	<b>GRAFITE/CERAMICA</b> <b>CARBON/CERAMIC</b> <b>KOHLE/KERAMIK</b>
--	--

A - M



DX	A	M
	F 3/8"	F 3/8"

mod	a	b	c	d	e	f	g	h	i	l	m	n	o	p	q	r	kg
PMO 45	120	98	-	25	123	126	215	15	82	80	7	230	63	-	-	-	4,6



H m	0	5	10	15	20	25,0	25	30,0	38
L / 1'	32,5	28	23,8	19,5	15,3	11,2	6,8	2,5	0

Ci riserviamo il diritto di apportare e modifiche tecniche.  
We reserve the right of technical modifications.  
Technische Änderungen vorbehalten.

Potenza motore Motor power Motor Leistung	<b>Hp kW</b> <b>0,49 0,36</b>
Tensione/Frequenza Tension/Frequency Spannung/Frequenz	<b>1~V/Hz</b> <b>230/50</b>
Corrente assorbita Power consumption Stromaufnahme	<b>A</b> <b>1,91</b>
GPM RPM UPM	<b>2800</b>
Condensatore Capacitor Kondensator	<b>12 µF</b>
Protezione termica Thermal Overload Überlastschutz	<b>155 °C</b>
Classe isolamento Insulation class Isolationsklasse	<b>F</b>
Grado protezione Protection class Schutzklasse	<b>IP 44</b>
Servizio Duty Betriebsart	<b>S5</b> <b>INTERMITTENTE</b> <b>INTERMITTANT</b> <b>KURZZEITIG</b>

REVISIONE N.02/11/02 P60/02