



ELETTROPOMPE CON MOTORE CHIUSO

ELECTRIC PUMPS WITH ENCLOSED ELECTRIC MOTOR

ELEKTROPUMPEN MIT GESCHLOSSENEM MOTOR

IP 44

ALTA PORTATA

HOHE FÖRDELEISTUNG

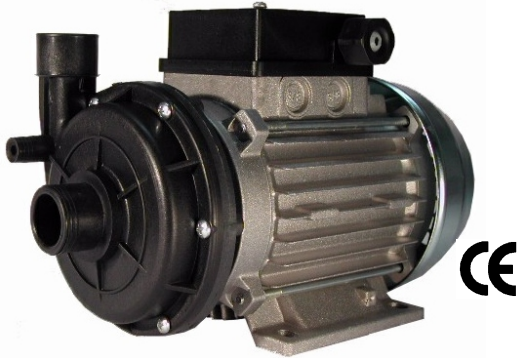
HIGH FLOW

1



ZA 110

kW 0.225 Hm 8.5 max
Hp 0.30 L/1' 110 max



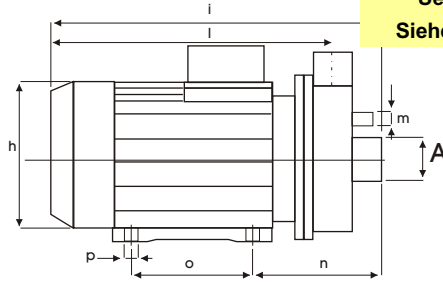
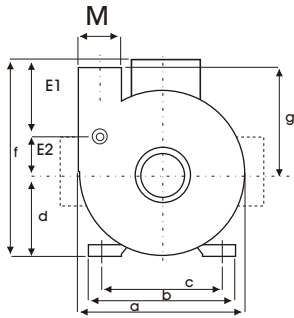
Corpo Pompa
Pump Body
Pumpengehäuse **PP 30GF / PPO 20GF**

Girante Aperta
Open Impeller
Offenes Laufrad **SPS G30**

Albero Motore
Motor Shaft
Motorwelle **AISI 416**

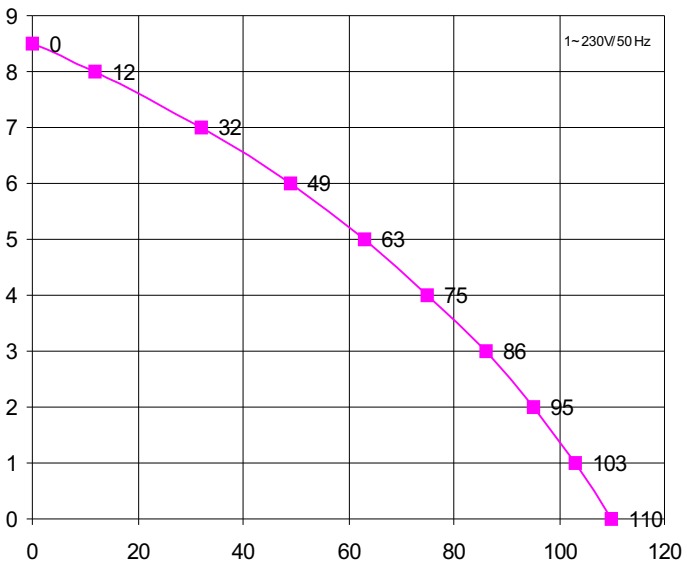
Tenuta Meccanica
Mechanical Seal
Gleitringdichtung **GRAFITE/CERAMICA
CARBON/CERAMIC
KOHLE/KERAMIK**

Vedi Parte n.7 - ACCESSORI per STAFFAGGIO
See Part n. 7 - ACCESSORIES for SUPPORTS
Siehe Teil Nr.7 - ZUBEHÖR - für BEFESTIGUNGEN



SX	A	M
L6:	41	31,5
L7:	45	40
L9:	50	50
F3:	1"	1"

mod	a	b	c	d	e	f	g	h	i	l	m	n	o	p	q	r	kg
ZF 210	97	60,5	59	160	149	58	145	34	12	73	34	72	179	-	-	-	5,2



Potenza motore
Motor power
Motor Leistung **Hp kW**
1,14 0,85

Tensione/Frequenza
Tension/Frequency
Spannung/Frequenz **1~V/Hz**
230/50

Corrente assorbita
Power consumption
Stromaufnahme **A**
3,7

GPM
RPM
UPM **2800**

Condensatore
Capacitor
Kondensator **12,5 µF**

Protezione termica
Thermal Overload
Überlastschutz **155 °C**

Classe isolamento
Insulation class
Isolationsklasse **F**

Grado protezione
Protection class
Schutzklasse **IP 00**

Servizio
Duty
Betriebsart **S1** **CONTINUO**
CONTINUOUS
DAUERBETRIEB

Ci riserviamo il diritto di apportare modifiche tecniche

We reserve the right of technical modifications

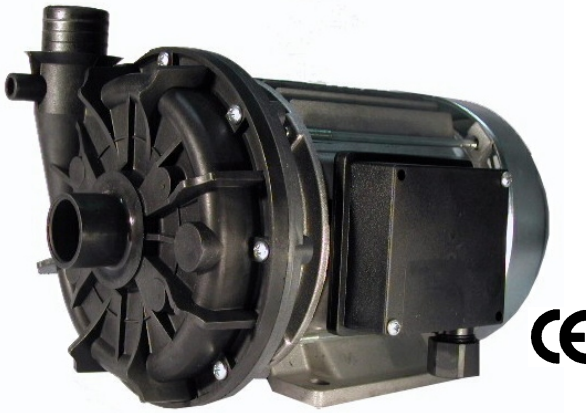
Technische Änderungen vorbehalten

REV. N.00.09/04



ZA 210

kW 0.56 Hm 14.0 max
Hp 0.75 L/1' 304 max

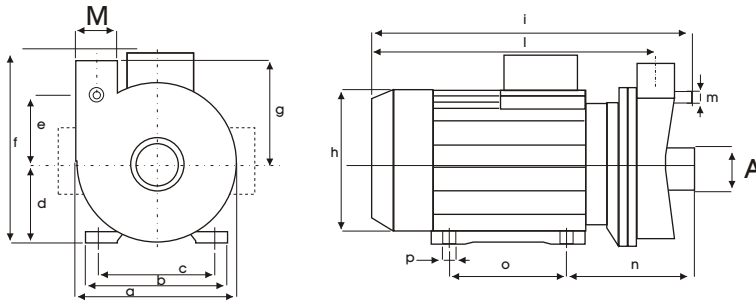


Corpo pompa
Pump Body
Pumpengehäuse **PP20GF / PP30GF**

Girante aperta
Open Impeller
Offenes Laufrad **PPO 20 GF**

Albero motore
Motor Shaft
Motorwelle **AISI 416**

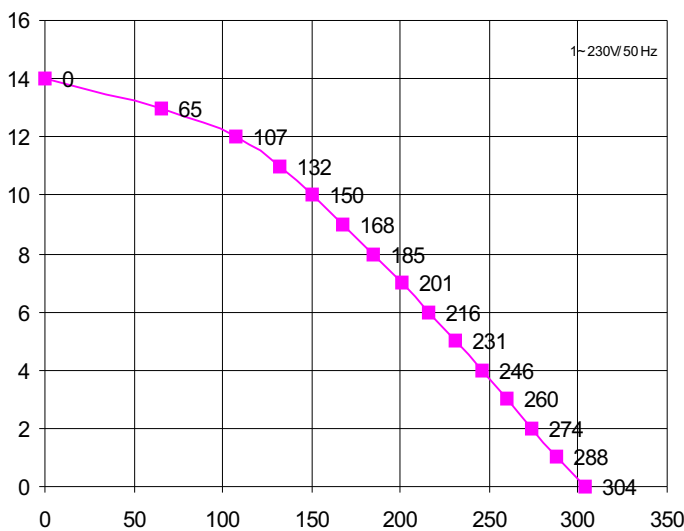
Tenuta meccanica
Mechanical Seal
Gleitringdichtung **GRAFITE/CERAMICA**
CARBON/CERAMIC
KOEHLE/KERAMIK



SX	A	M	
	L1:	41	31,5
	L2:	50	50
	L3:	45	40
	F:	1"	1"

REVISIONE nr.1/07/02

mod	a	b	c	d	e	f	g	h	i	l	m	n	o	p	kg
ZA 210	160	113	90	77	60,5	179	101	142	268	233	13	100	90	8	6,7



Hm	0	1	3	5	6	7	8	9	10	12	13	14
L/1'	304	288	260	231	216	201	185	168	150	107	65	0

Potenza motore
Motor power
Motor Leistung **Hp 0,75 kW 0,56**

Tensione/Frequenza
Tension/Frequency
Spannung/Frequenz **1~V/Hz 3~V/Hz**
230/50 230-400/50

Corrente assorbita
Power consumption
Stromaufnahme **A A**
4,1 3,4 - 2,4

GPM
RPM
UPM **2800**

Condensatore
Capacitor
Kondensator **16 µF**

Protezione termica
Thermal Overload
Überlastschutz **155 °C**

Classe isolamento
Insulation class
Isolationsklasse **F**

Grado protezione
Protection class
Schutzklasse **IP 44**

Servizio
Duty
Betriebsart **S1** **CONTINUO**
CONTINUOS
DAUERBETRIEB

Ci riserviamo il diritto di apportare modifiche tecniche

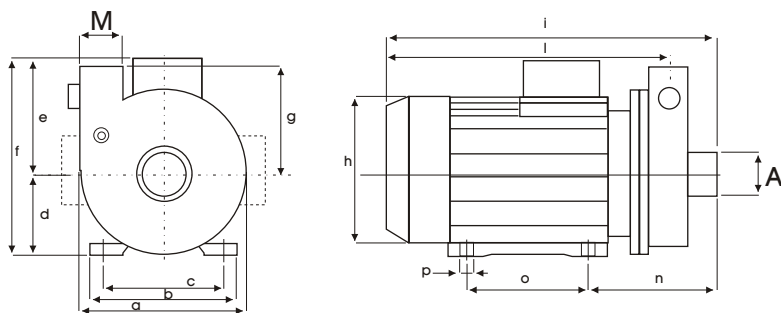
We reserve the right of technical modifications

Technische Änderungen vorbehalten




ZA 220

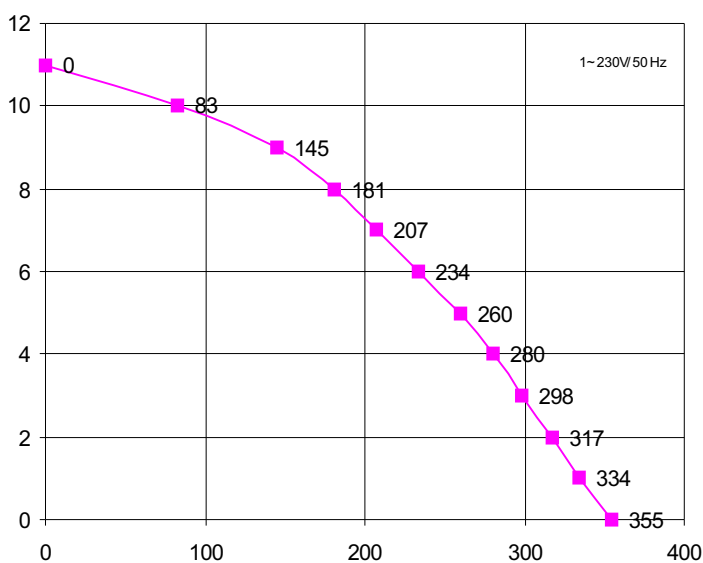
kW 0.37 H/m 11.0 max
Hp 0.50 L/1' 355 max



Corpo Pompa Pump Body Pumpengehäuse	PP 30 GF
Girante Chiusa Closed Impeller Geschl. Laufrad	PPO 20GF
Albero Motore Motor Shaft Motorwelle	AISI 430 F
Tenuta Meccanica Mechanical Seal Gleitringdichtung	GRAFITE/CERAMICA CARBON/CERAMIC KOHLE/KERAMIK

	SX	A	M
 L8:		45	42

mod	a	b	c	d	e	f	g	h	i	l	m	n	o	p	kg
ZA 220	138	120	98	63	92	155	70	125	260	222	-	115	80	8	6,7



H m	0	1	2	3	4	5	6	7	8	9	11
L / 1'	355	334	317	298	280	260	234	207	181	145	0

Potenza motore Motor power Motor Leistung	Hp kW 1,36 1,0
Tensione/Frequenza Tension/Frequency Spannung/Frequenz	1~V/Hz 230/50
Corrente assorbita Power consumption Stromaufnahme	A 4,75
GPM RPM UPM	2800
Condensatore Capacitor Kondensator	16 µF
Protezione termica Thermal Overload Überlastschutz	155 °C
Classe isolamento Insulation class Isolationsklasse	F
Grado protezione Protection class Schutzklasse	IP 44
Servizio Duty Betriebsart	S1 CONTINUO CONTINUOS DAUERBETRIEB

Ci riserviamo il diritto di apportare modifiche tecniche

We reserve the right of technical modifications

Technische Änderungen vorbehalten

REVISIONE N.00.02/03 P156/01



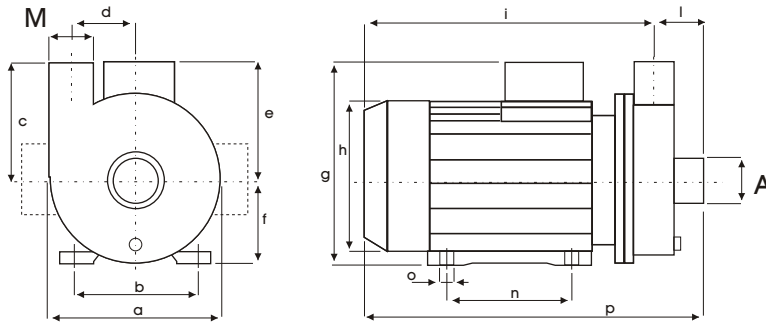
ZA 340

kW 0.71
Hp 0.97

Hm 11.0 max
L/1' 360 max



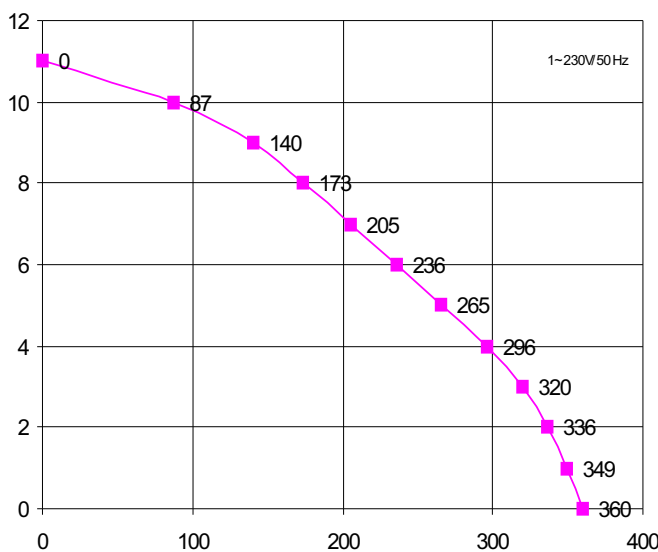
Corpo Pompa Pump Body Pumpengehäuse	PP 30 GF
Girante Aperta Open Impeller Offenes Laufrad	SPS G30
Albero Motore Motor Shaft Motorwelle	AISI 416
Tenuta Meccanica Mechanical Seal Gleitringdichtung	GRAFITE/CERAMICA CARBON/CERAMIC KOHLE/KERAMIK



SX	A	M
L7:	45	40
L9:	50	50
L10:	60	50

mod	a	b	c	d	e	f	g	h	i	l	m	n	o	pL1	pL2	pL3	kg
ZA 340	160	110	107	52	102	71	182	142	241	52	-	90	8	287	290	293	6,7

REVISIONE N.00.02/03 P03-79/00



Hm	0	1	2	3	4	5	6	7	8	9	10	11
L/1'	360	349	336	320	296	265	236	205	173	140	87	0

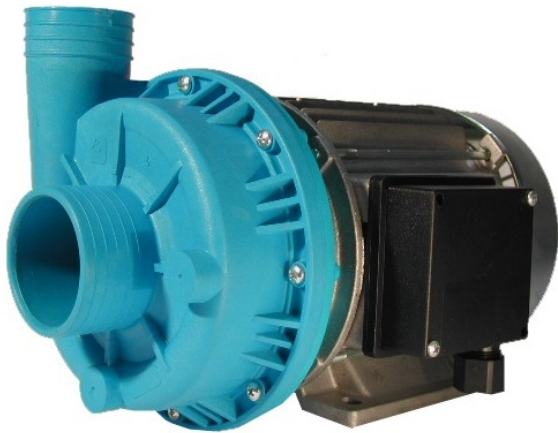
Potenza motore Motor power Motor Leistung	Hp kW	0,95 0,71
Tensione/Frequenza Tension/Frequency Spannung/Frequenz	1~V/Hz 3~V/Hz	230/50 230-400/50
Corrente assorbita Power consumption Stromaufnahme	A A	4,2 1,4 - 2,4
GPM RPM UPM		2800
Condensatore Capacitor Kondensator	16 µF	----
Protezione termica Thermal Overload Überlastschutz		155 °C
Classe isolamento Insulation class Isolationsklasse		F
Grado protezione Protection class Schutzklasse		IP 44
Servizio Duty Betriebsart	S1	CONTINUO CONTINUOS DAUERBETRIEB

Ci riserviamo il diritto di apportare modifiche tecniche
We reserve the right of technical modifications
Technische Änderungen vorbehalten

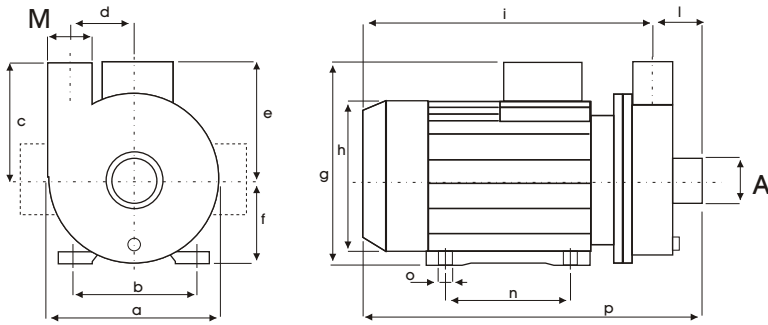


ZA 400

kW 0.90 Hm 12.0 max
Hp 1.20 L/1' 440 max

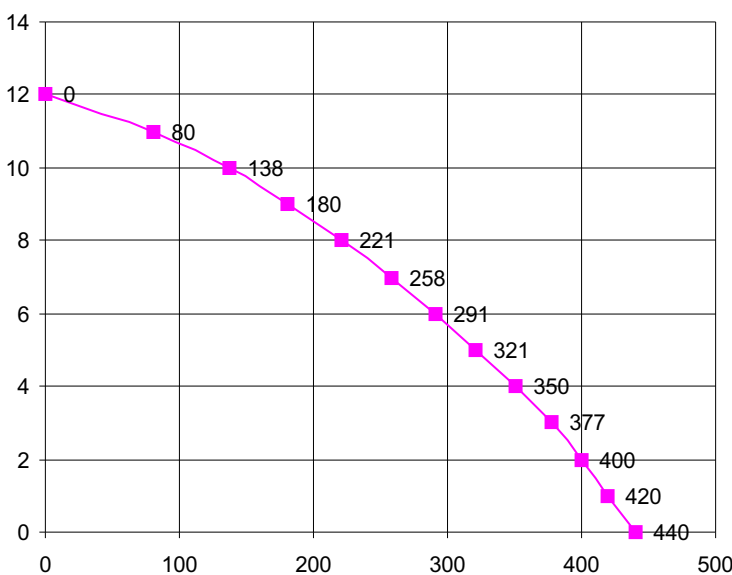


Corpo Pompa Pump Body Pumpengehäuse	PP 30 GF
Girante Chiusa Closed Impeller Geschl. Laufrad	PPO 20 GF
Albero Motore Motor Shaft Motorwelle	C 40
Tenuta Meccanica Mechanical Seal Gleitringdichtung	GRAFITE/CERAMICA CARBON/CERAMIC KOHLE/KERAMIK



SX	A	M
L7:	45	40
L9:	50	50
L10:	60	50

mod	a	b	c	d	e	f	g	h	i	l	m	n	o	p	kg
ZA 400	160	110	107	52	102	71	182	142	241	49	-	90	8	290	7,1



Hm	0	1	3	5	6	7	8	9	10	11	12
L / 1'	440	420	377	321	291	258	221	180	138	80	0

Potenza motore Motor power Motor Leistung	Hp	kW
	1,21	0,9
Tensione/Frequenza Tension/Frequency Spannung/Frequenz	1~V/Hz	3~V/Hz
	230/50	230-400/50
Corrente assorbita Power consumption Stromaufnahme	A	A
	4,7	3,6 - 2,6
GPM RPM UPM	2800	
Condensatore Capacitor Kondensator	20 µF	
Protezione termica Thermal Overload Überlastschutz	155 °C	
Classe isolamento Insulation class Isolationsklasse	F	
Grado protezione Protection class Schutzklasse	IP 44	
Servizio Duty Betriebsart	S1	CONTINUO CONTINUOUS DAUERBETRIEB

Ci riserviamo il diritto di apportare modifiche tecniche
We reserve the right of technical modifications
Technische Änderungen vorbehalten

REVISIONE N.03.07/03



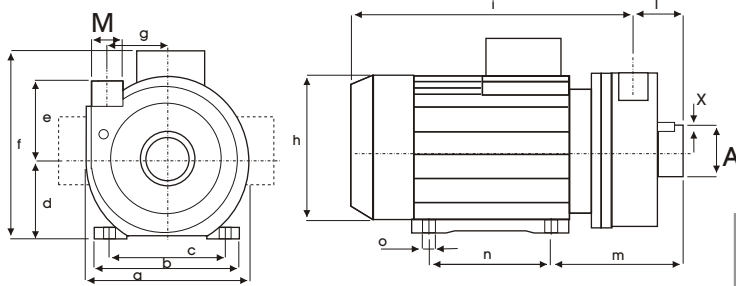
FM 4023

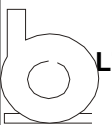

kW 0.64
Hp 0.87

Hm 9.5 max
L/1' 335 max

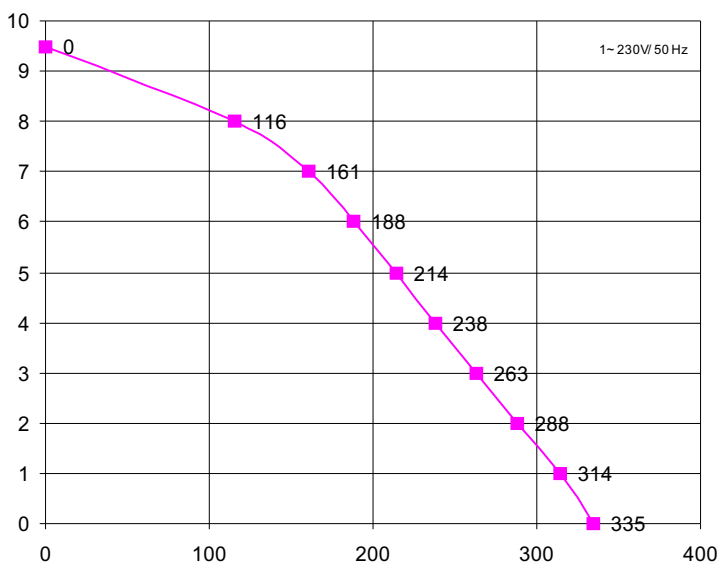


Corpo Pompa Pump Body Pumpengehäuse	PP 30 GF
Girante Aperta Open Impeller Offenes Laufrad	SPS G30
Albero Motore Motor Shaft Motorwelle	AISI 416
Tenuta Meccanica Mechanical Seal Gleitringdichtung	GRAFITE/CERAMICA CARBON/CERAMIC KOHLE/KERAMIK



SX	A	M	DX	A	M
 L7:	45	40	 L7:	45	40

mod	a	b	c	d	e	f	g	h	i	l	m	n	o	x	kg
FM4023	190	140	112	71	75	145	57	142	246	44	129	90	8	12	7,0



H m	0	1	2	3	4	5	6	7	8	9,5
L / 1'	335	314	288	273	254	232	210	186	123	0

Potenza motore Motor power Motor Leistung	Hp kW
	0,86 0,64

Tensione/Frequenza Tension/Frequency Spannung/Frequenz	1-V/Hz
	230/50

Corrente assorbita Power consumption Stromaufnahme	A
	3,26

GPM RPM UPM	2800
-------------------	------

Condensatore Capacitor Kondensator	16 µF
--	-------

Protezione termica Thermal Overload Überlastschutz	155 °C
--	--------

Classe isolamento Insulation class Isolationsklasse	F
---	---

Grado protezione Protection class Schutzklasse	IP 44
--	-------

Servizio Duty Betriebsart	S1	CONTINUO CONTINUOUS DAUERBETRIEB
---------------------------------	----	--

REVISIONE N.03/03 P03-153/01

Ci riserviamo il diritto di apportare modifiche tecniche
We reserve the right of technical modifications
Technische Änderungen vorbehalten



AM 5225

kW 0.90 Hm 10.0 max
Hp 1.20 L/1' 618 max

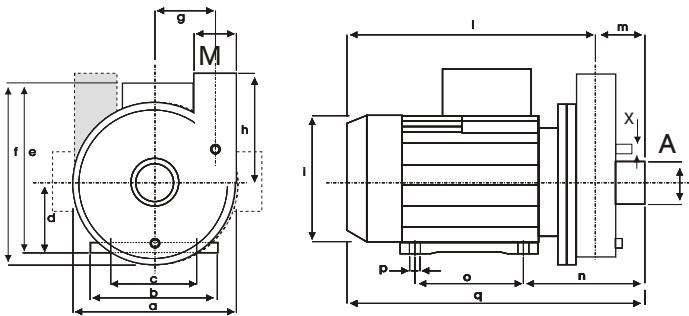


Corpo Pompa
Pump Body
Pumpengehäuse **PP 30 GF**

Girante Aperta
Open Impeller
Offenes Laufrad **SPS G30**

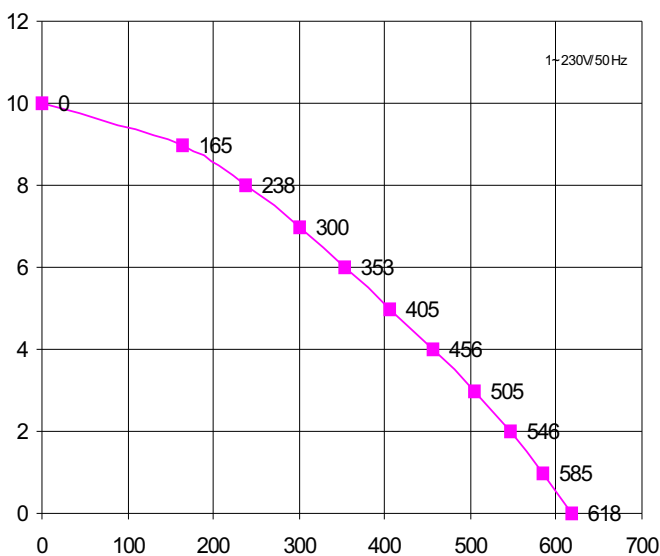
Albero Motore
Motor Shaft
Motorwelle **AISI 416**

Tenuta Meccanica
Mechanical Seal
Gleitringdichtung **GRAFITE/CERAMICA**
CARBON/CERAMIC
KOHLE/KERAMIK



SX	A	M	DX	A	M		
	L9:	50	50		L10:	60	50
	L10:	60	50		L12:	70	60
	L11:	63	63		F4:	2"	1½"
	L12:	70	60				

mod	a	b	c	d	e	f	g	h	i	l	m	n	o	p	q	x	kg
AM5225	212	135	110	71	182	213	75	112	142	248	54	134	90	8	302	12	6,8



H m	0	1	3	5	6	7	8	9	10
L / 1'	618	585	505	405	353	300	238	165	0

Ci riserviamo il diritto di apportare modifiche tecniche

We reserve the right of technical modifications

Technische Änderungen vorbehalten

Potenza motore Hp **1,21** kW **0,9**
Motor power
Motor Leistung

Tensione/Frequenza 1~V/Hz 3~V/Hz
Tension/Frequency 230/50 230-400/50
Spannung/Frequenz

Corrente assorbita A **4,9** A **3,5 - 2,1**
Power consumption
Stromaufnahme

GPM
RPM **2800**
UPM

Condensatore 20 µF ----
Capacitor
Kondensator

Protezione termica 155 °C
Thermal Overload
Überlastschutz

Classe isolamento F
Insulation class
Isolationsklasse

Grado protezione IP 44
Protection class
Schutzklasse

Servizio S1 CONTINUO
Duty CONTINUOUS
Betriebsart DAUERBETRIEB

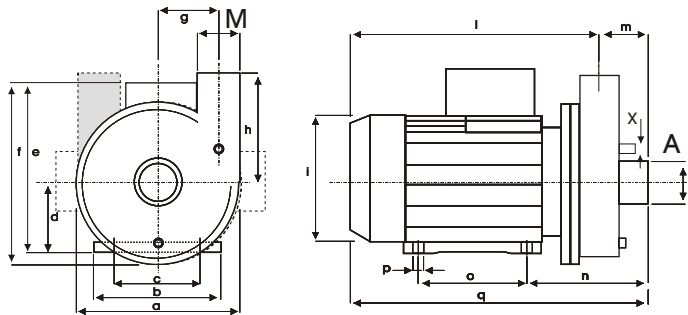


AM 5226

kW 0.90 Hm 10 max
Hp 1.22 L/1' 618 max



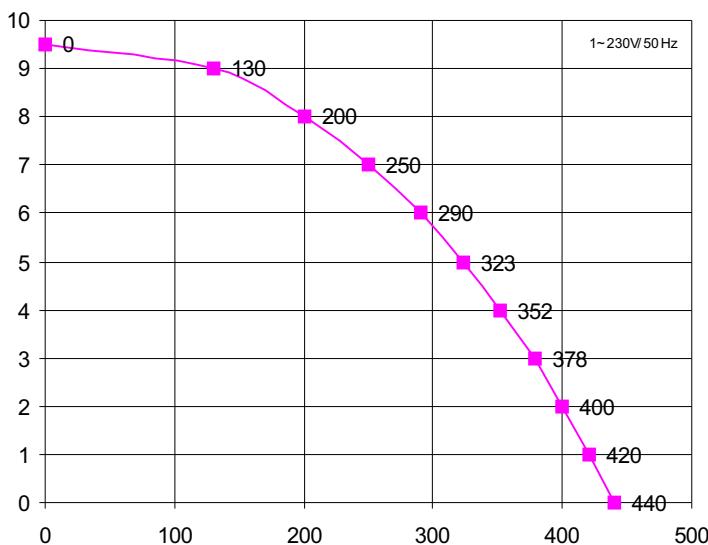
Corpo Pompa Pump Body Pumpengehäuse	PP 30 GF
Girante Aperta Open Impeller Offenes Laufrad	SPS G30
Albero Motore Motor Shaft Motorwelle	AISI 416
Tenuta Meccanica Mechanical Seal Gleitringdichtung	GRAFITE/CERAMICA CARBON/CERAMIC KOHLE/KERAMIK



SX	A	M	DX	A	M		
	L9:	50	50		L10:	60	50
	L10:	60	50		L12:	70	60
	L11:	63	63		F4:	2"	1½"
	L12:	70	60				

mod	a	b	c	d	e	f	g	h	i	l	m	n	o	p	q	x	kg
AM5226	212	135	110	71	182	213	75	112	142	248	54	134	90	8	302	12	6,8

REVISIONE N.03.07/03



Hm	0	1	2	3	4	5	6	7	8	9	9,5
L / 1'	440	420	400	378	352	323	290	250	200	130	0

Ci riserviamo il diritto di apportare modi fiche tecniche

We reserve the right of technical modifications

Technische Änderungen vorbehalten

Potenza motore Motor power Motor Leistung	Hp	kW
	0,8	0,6
Tensione/Frequenza Tension/Frequency Spannung/Frequenz	1~V/Hz	3~V/Hz
	230/50	230-400/50
Corrente assorbita Power consumption Stromaufnahme	A	A
	3,8	3,1 - 2,1
GPM RPM UPM	2800	
Condensatore Capacitor Kondensator	16 µF	
Protezione termica Thermal Overload Überlastschutz	155 °C	
Classe isolamento Insulation class Isolationsklasse	F	
Grado protezione Protection class Schutzklasse	IP 44	
Servizio Duty Betriebsart	S1	CONTINUO CONTINUOUS DAUERBETRIEB

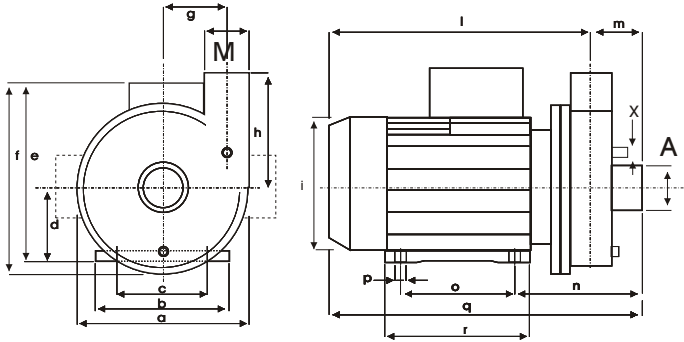


ZF 650DX

kW 1.10 Hm 12.0 max
Hp 1.50 L/1' 734 max



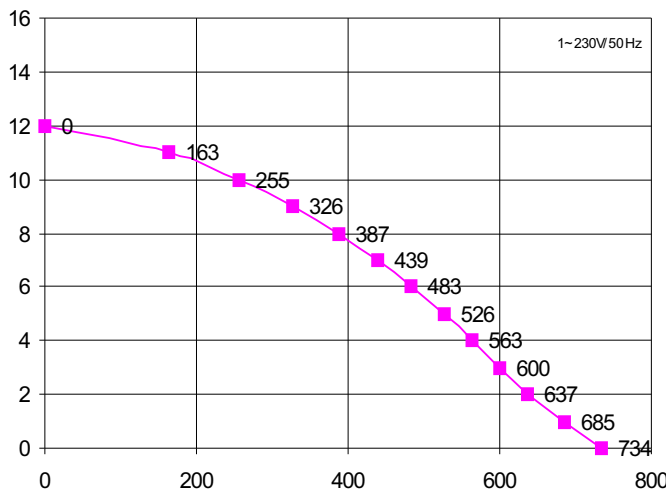
Corpo Pompa Pump Body Pumpengehäuse	PP 30 GF
Girante Aperta Open Impeller Offenes Laufrad	SPS G30
Albero Motore Motor Shaft Motorwelle	AISI 416
Tenuta Meccanica Mechanical Seal Gleitringdichtung	GRAFITE/CERAMICA CARBON/CERAMIC KOHLE/KERAMIK



DX	A	M
L10:	60	50
L12:	70	60
F4:	2"	1½"

REVISIONE N.07/03 P69/02

mod	a	b	c	d	e	f	g	h	i	l	m	n	o	p	q	x	kg
ZF 650DX	210	155	127	80	175	195	78	110	160	290	50	147	100	9	339	12	11,1



H m	0	1	3	5	7	9	11	12
L / 1'	734	685	600	526	439	326	163	0

Ci riserviamo il diritto di apportare modifiche tecniche

We reserve the right of technical modifications

Technische Änderungen vorbehalten

Potenza motore Motor power Motor Leistung	Hp	kW
	2,11	1,55
Tensione/Frequenza Tension/Frequency Spannung/Frequenz	1~V/Hz	3~V/Hz
	230/50	230-400/50
Corrente assorbita Power consumption Stromaufnahme	A	A
	7,2	4,9-2,9
GPM RPM UPM	2800	
Condensatore Capacitor Kondensator	25 µF	----
Protezione termica Thermal Overload Überlastschutz	155 °C	
Classe isolamento Insulation class Isolationsklasse	F	
Grado protezione Protection class Schutzklasse	IP 44	
Servizio Duty Betriebsart	S1	CONTINUO CONTINUOUS DAUERBETRIEB



ZF 650SX

kW 1.10 Hm 12.0 max
Hp 1.50 L/1' 734 max

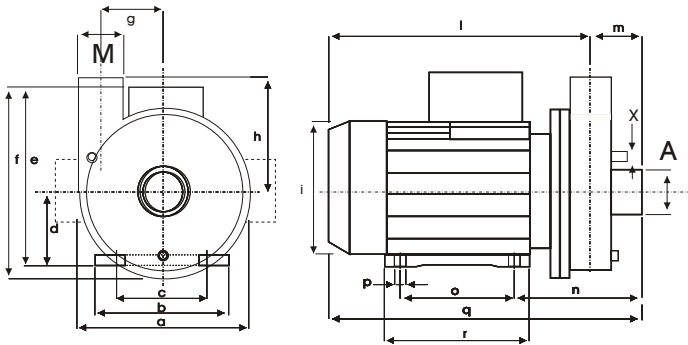


Corpo Pompa
Pump Body
Pumpengehäuse **PP 30 GF**

Girante Aperta
Open Impeller
Offenes Laufrad **SPS G30**

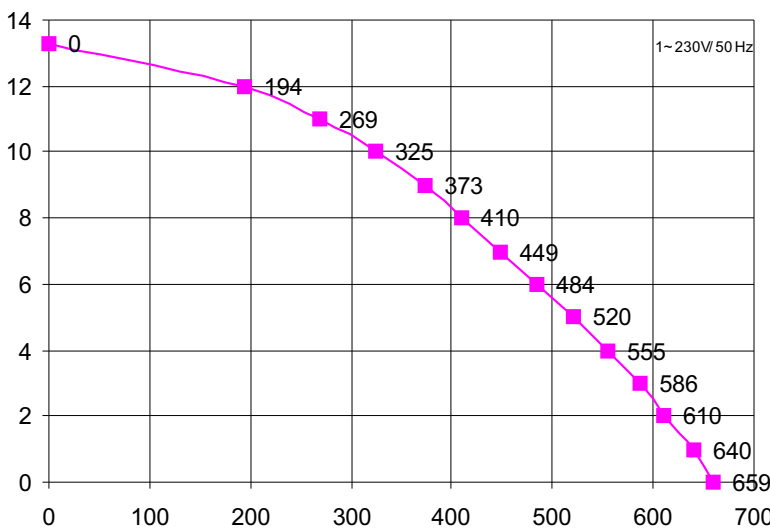
Albero Motore
Motor Shaft
Motorwelle **AISI 416**

Tenuta Meccanica
Mechanical Seal
Gleitringdichtung **GRAFITE/CERAMICA
CARBON/CERAMIC
KOHLE/KERAMIK**



SX	A	M
L9:	50	50
L10:	60	50
L11:	63	63
L12:	70	60

mod	a	b	c	d	e	f	g	h	i	l	m	n	o	p	q	x	kg
ZF 650SX	210	155	127	80	175	195	78	110	160	290	50	147	100	9	339	12	11,1



Potenza motore
Motor power
Motor Leistung **Hp 2 kW 1,5**

Tensione/Frequenza
Tension/Frequency
Spannung/Frequenz **1~V/Hz 3~V/Hz
230/50 230-400/50**

Corrente assorbita
Power consumption
Stromaufnahme **A A
6,62 3,05**

GPM
RPM
UPM **2800**

Condensatore
Capacitor
Kondensator **25 µF ----**

Protezione termica
Thermal Overload
Überlastschutz **155 °C**

Classe isolamento
Insulation class
Isolationsklasse **F**

Grado protezione
Protection class
Schutzklasse **IP 44**

Servizio
Duty
Betriebsart **S1 CONTINUO
CONTINUOS
DAUERBETRIEB**

H m	0	1	3	5	7	9	11	12	13,3
L / 1'	659	640	586	520	449	373	269	194	0

Ci riserviamo il diritto di apportare modifiche tecniche
Ci riserviamo il diritto di apportare modifiche tecniche
We reserve the right of technical modifications
We reserve the right of technical modifications
Technische Änderungen vorbehalten
Technische Änderungen vorbehalten



ZF 900

kW 2.27 Hm 15 max
Hp 3.84 L/1' 740 max

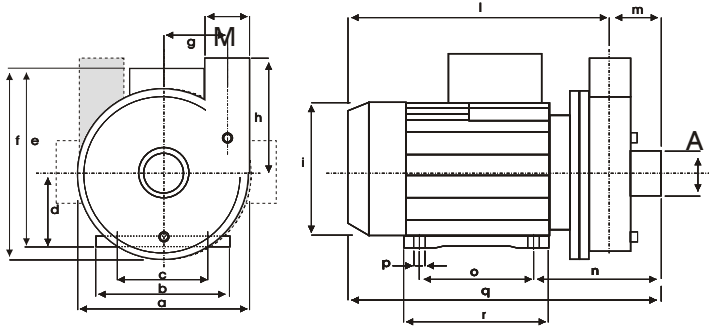


Corpo Pompa
Pump Body
Pumpengehäuse **PP 30 GF**

Girante Aperta
Open Impeller
Offenes Laufrad **SPS G30**

Albero Motore
Motor Shaft
Motorwelle **AISI 416**

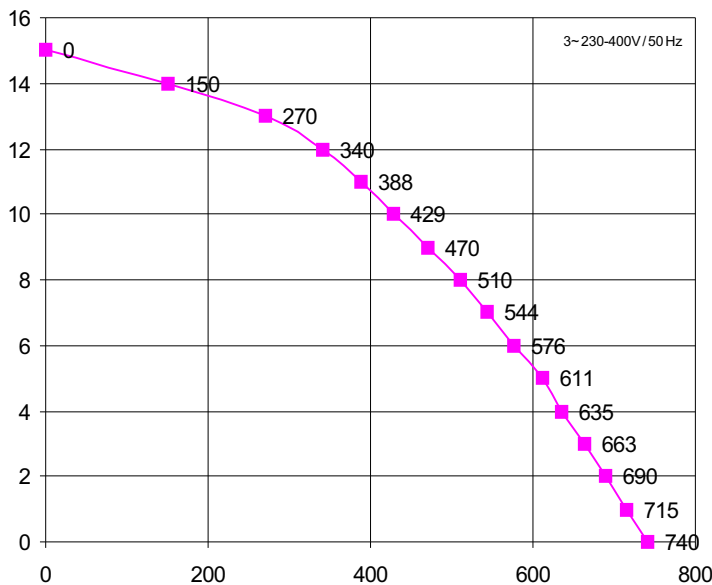
Tenuta Meccanica
Mechanical Seal
Gleitringdichtung **GRAFITE/CERAMICA**
CARBON/CERAMIC
KOHLE/KERAMIK



DX	A	M
L10:	60	50
L11:	60	60
L12:	70	60
F5:	2 1/2"	2"

mod	a	b	c	d	e	f	g	h	i	l	m	n	o	p	q	r	kg
ZF 900	210	170	130	90	195	215	78	110	170	330	56	160	125	10	385	153	15,7

REVISIONE N.01/12/02 P26/02



H m	0	1	2	3	5	7	9	12	15
L / 1'	740	715	690	663	611	544	470	340	0

Potenza motore
Motor power
Motor Leistung **Hp 3,05 kW 2,27**

Tensione/Frequenza
Tension/Frequency
Spannung/Frequenz **3~V/Hz 400/50**

Corrente assorbita
Power consumption
Stromaufnahme **A 4,09**

GPM
RPM
UPM **2800**

Protezione termica
Thermal Overload
Überlastschutz **155 °C**

Classe isolamento
Insulation class
Isolationsklasse **F**

Grado protezione
Protection class
Schutzklasse **IP 45**

Servizio
Duty
Betriebsart **S1 CONTINUO**
CONTINUOUS
DAUERBETRIEB

Ci riserviamo il diritto di apportare modifiche tecniche

We reserve the right of technical modifications

Technische Änderungen vorbehalten



ZF 1000

kW 2.88 Hm 17.5 max
Hp 3.84 L/1' 1000 max

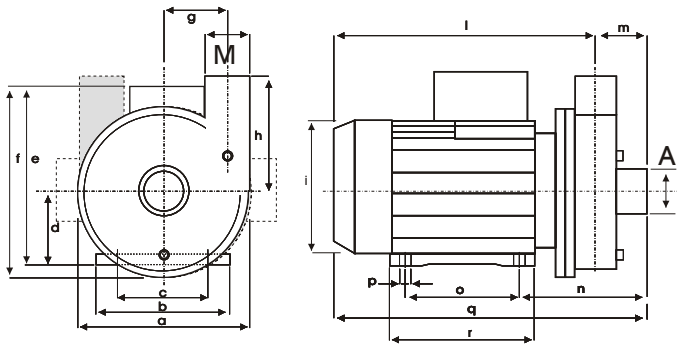


Corpo Pompa
Pump Body
Pumpengehäuse **PA 66 30 GF**

Girante Aperta
Open Impeller
Offenes Laufrad **SPS G 30**

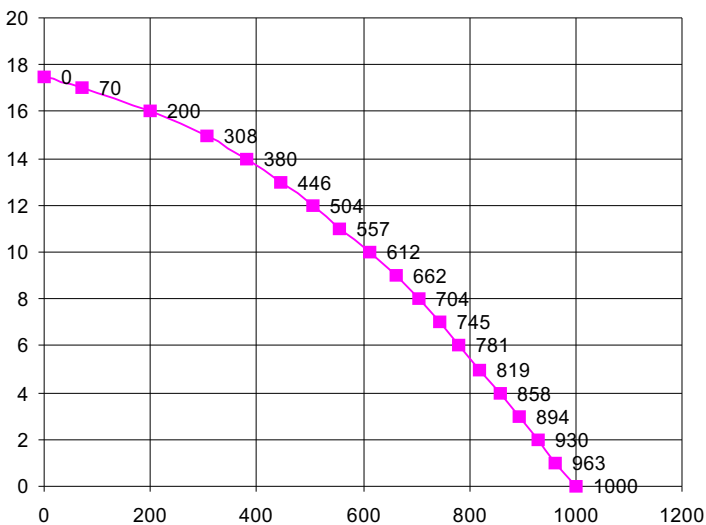
Albero Motore
Motor Shaft
Motorwelle **AISI 316 / C40**

Tenuta Meccanica
Mechanical Seal
Gleitringdichtung **GRAFITE/CERAMICA**
CARBON/CERAMIC
KOHLE/KERAMIK



SX	A	M	DX	A	M
L11:	60	60	L11:	60	60
L12:	70	60	L12:	70	60
F5:	2 1/2"	2"	F5:	2 1/2"	2"

mod	a	b	c	d	e	f	g	h	i	l	m	n	o	p	q	r	kg
ZF 1000	225	170	140	90	200	215	90	130	178	223	56	140	125	10	376	153	16,0



H m	0	2	5	7	8	9	10	12	14	16	17,5
L / 1'	1000	930	819	745	704	662	612	504	380	200	0

Potenza motore Hp **3,84** kW **2,88**
Motor power
Motor Leistung

Tensione/Frequenza 3~V/Hz
Tension/Frequency
Spannung/Frequenz **230-400/50**

Corrente assorbita A
Power consumption
Stromaufnahme **8,4 - 4,86**

GPM
RPM
UPM **2800**

Protezione termica
Thermal Overload
Überlastschutz **155 °C**

Classe isolamento
Insulation class
Isolationsklasse **F**

Grado protezione
Protection class
Schutzklasse **IP 44**

Servizio S1 CONTINUO
Duty CONTINUOUS
Betriebsart DAUERBETRIEB

Ci riserviamo il diritto di apportare modifiche tecniche

We reserve the right of technical modifications

Technische Änderungen vorbehalten



ZF 1200

kW 3.36

Hm 19.0 max

Hp 4.48

L/1' 1165 max

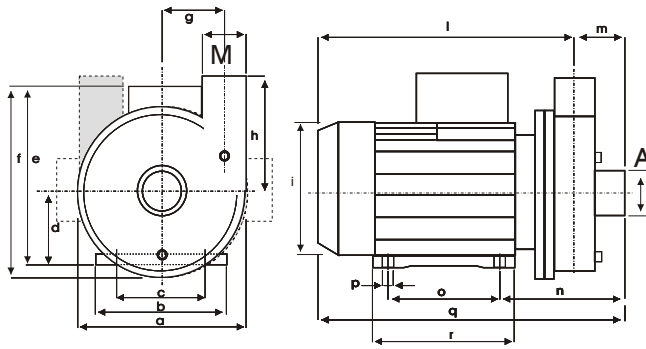




Corpo Pompa
Pump Body
Pumpengehäuse **PA 66 30GF**

Girante Aperta
Open Impeller
Offenes Laufrad **SPS G 30**

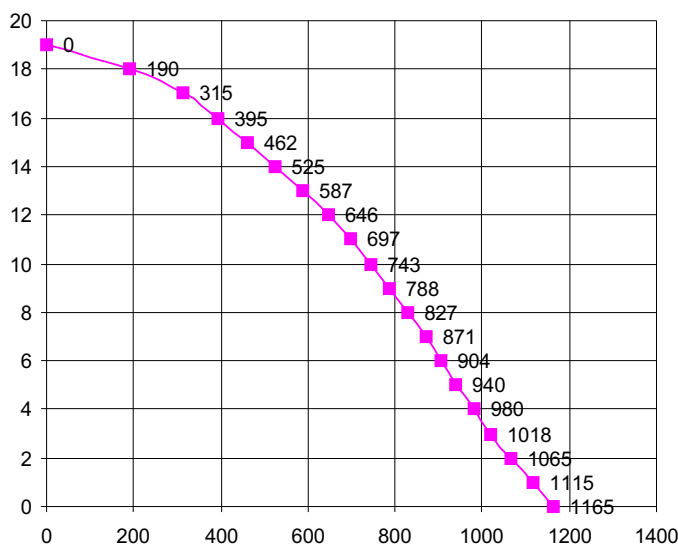
Albero Motore
Motor Shaft
Motorwelle **AISI 316 / C40**

Tenuta Meccanica
Mechanical Seal
Gleitringdichtung **GRAFITE/CERAMICA**
CARBON/CERAMIC
KOEHLE/KERAMIK



SX	A	M	DX	A	M
	L11: 60	60		L11: 60	60
	L12: 70	60		L12: 70	60
	F5: 2 1/2"	2"		F5: 2 1/2"	2"

mod	a	b	c	d	e	f	g	h	i	l	m	n	o	p	q	r	kg
ZF 1200	225	170	140	90	200	215	90	130	178	323	56	140	125	10	376	153	18,6



Hm	0	2	4	6	7	8	9	10	12	14	16	18	19
L/1'	1165	1065	980	904	871	827	788	743	646	525	395	190	0

Potenza motore **Hp** **kW**
Motor power **4,51** **3,36**
Motor Leistung

Tensione/Frequenza **3~V/Hz**
Tension/Frequency **230-400/50**
Spannung/Frequenz

Corrente assorbita **A**
Power consumption **10,5 - 6,1**
Stromaufnahme

GPM
RPM **2800**
UPM

Protezione termica **155 °C**
Thermal Overload
Überlastschutz

Classe isolamento **F**
Insulation class
Isolationsklasse

Grado protezione **IP 44**
Protection class
Schutzklasse

Servizio **S1** **CONTINUO**
Duty **CONTINUOUS**
Betriebsart **DAUERBETRIEB**

REVISIONE N. 04/02/04 P.74/01

Si riserviamo il diritto di apportare modifiche tecniche che

We reserve the right of technical modifications

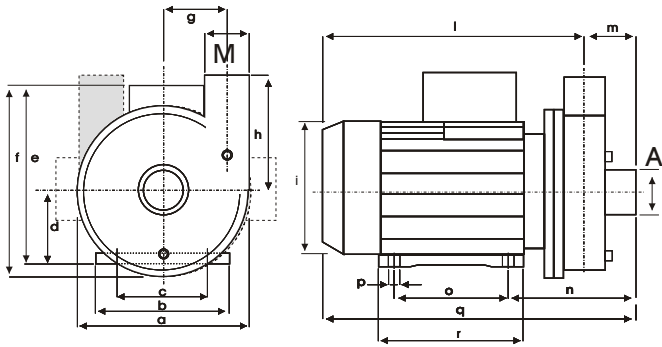
Technische Änderungen vorbehalten



ZDV 1200

kW 3.36
Hp 4.48

Hm 19.0 max
L/1' 1165 max



Corpo Pompa
Pump Body
Pumpengehäuse **PA 66 30GF**

Girante Aperta
Open Impeller
Offenes Laufrad **SPS G 30**

Albero Motore
Motor Shaft
Motorwelle **AISI 316 / C40**

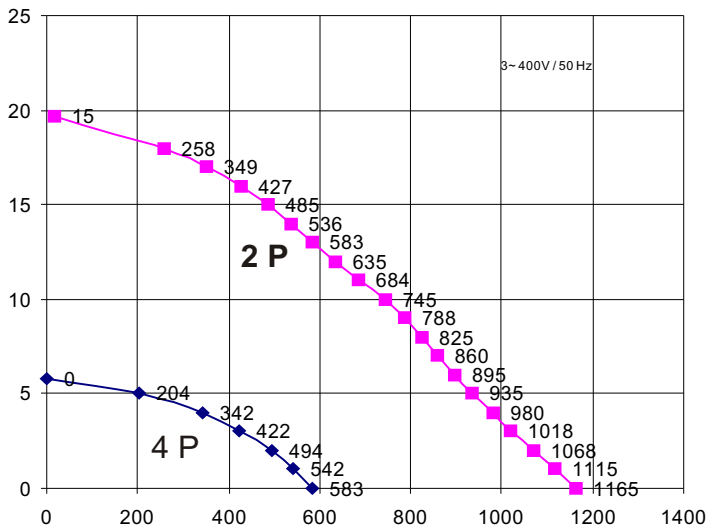
Tenuta Meccanica
Mechanical Seal
Gleitringdichtung **GRAFITE/CERAMICA
CARBON/CERAMIC
KOHLE/KERAMIK**

Potenza motore **2 poli** Hp **4,3** kW **3,2**
Motor power **2 poles**
Motor Leistung **Pole**

Potenza motore **4 poli** Hp **0,59** kW **0,8**
Motor power **4 poles**
Motor Leistung **Pole**

SX	A	M	DX	A	M
L11:	60	60	L11:	60	60
L12:	70	60	L12:	70	60
F5:	2½"	2"	F5:	2½"	2"

mod	a	b	c	d	e	f	g	h	i	l	m	n	o	p	q	r	kg
ZDV 1200	225	170	140	90	200	215	90	130	178	320	56	150	121	10,5	376	153	19,6



Hm	0	2	4	6	8	9	10	12	14	16	18	20
L/1'	1165	1068	980	895	825	788	745	635	536	427	258	0

Hm	0	1	2	3	4	5	5,8
L/1'	583	542	494	422	342	204	0

Ci riserviamo il diritto di apportare modifiche tecniche

We reserve the right of technical modifications

Technische Änderungen vorbehalten

Tensione/Frequenza
Tension/Frequency
Spannung/Frequenz **3~V/Hz
400/50**

Corrente assorbita poli **A**
Power consumption **2 poles** **4,93**
Stromaufnahme **Pole**

Corrente assorbita poli **A**
Power consumption **4 poles** **2,30**
Stromaufnahme **Pole**

GPM poli
RPM **2 poles** **2800** | **4 poles** **1450**
UPM **Pole** **Pole**

Protezione termica
Thermal Overload
Überlastschutz **160 °C**

Classe isolamento
Insulation class
Isolationsklasse **F**

Grado protezione
Protection class
Schutzklasse **IP 44**

Servizio
Duty
Betriebsart **S1** **CONTINUO
CONTINUOUS
DAUERBETRIEB**



ELETTROPOMPE CON MOTORE CHIUSO

ELECTRIC PUMPS WITH ENCLOSED ELECTRIC MOTOR

ELEKTROPUMPEN MIT GESCHLOSSENEM MOTOR

IP 44

ALTA PRESSIONE

HOHER DRUCK

HIGH PRESSURE

2



PS 45

kW 0.30 Hm 33.0 max
Hp 0.40 L/1' 32.5 max

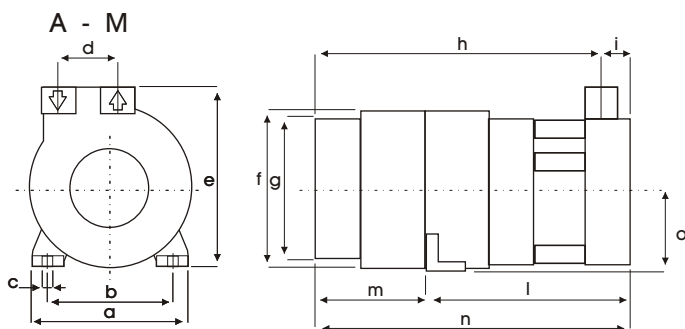


Corpo pompa OTTONE OT 58
Pump Body BRASS 58
Pumpengehäuse MESSING MS 58

Girante aperta OTTONE OT 58
Open Impeller BRASS 58
Offenes Laufrad MESSING MS 58

Albero motore AISI 430 F
Motor Shaft Motorwelle

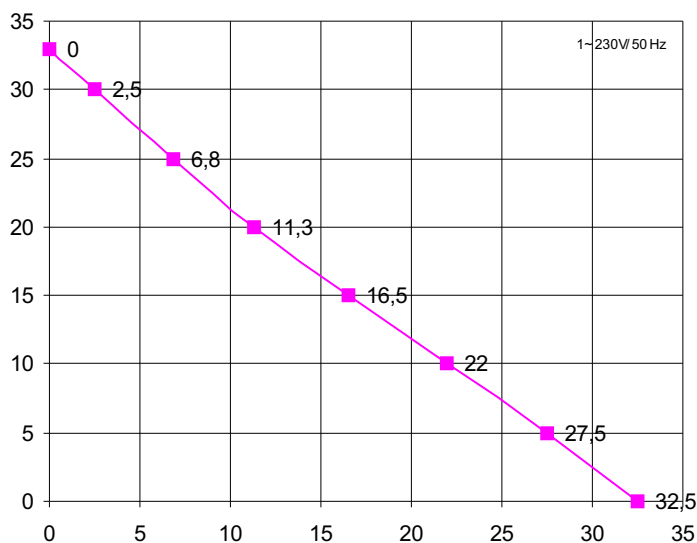
Tenuta meccanica GRAFITE/CERAMICA
Mechanical Seal CARBON/CERAMIC
Gleitringdichtung KOHLE/KERAMIK



DX	A	M
	F	F
	F 3/8"	F 3/8"

mod	a	b	c	d	e	f	g	h	i	l	m	n	o	p	q	r	kg
PS 45	96	75	6,5	25	102	96	87	147	15	107	55	162	50	-	-	-	4,0

REVISIONE N.02/11/02 P62/02



H m	0	5	10	15	20	25	30	33
L / 1'	32,5	27,5	22,0	16,5	11,3	6,8	2,5	0

Ci riserviamo il diritto di apportare modi fiche tecniche.
We reserve the right of technical modifications.
Technische Änderungen vorbehalten.

Potenza motore Hp kW
Motor power 0,4 0,3
Motor Leistung

Tensione/Frequenza 1~V/Hz
Tension/Frequency 230/50
Spannung/Frequenz

Corrente assorbita A
Power consumption 1,73
Stromaufnahme

GPM
RPM 2800
UPM

Condensatore 8 µF
Capacitor
Kondensator

Protezione termica 155 °C
Thermal Overload
Überlastschutz

Classe isolamento F
Insulation class
Isolationsklasse

Grado protezione IP 44
Protection class
Schutzklasse

Servizio INTERMITTENTE
Duty INTERMITTANT
Betriebsart S5 KURZZEITIG

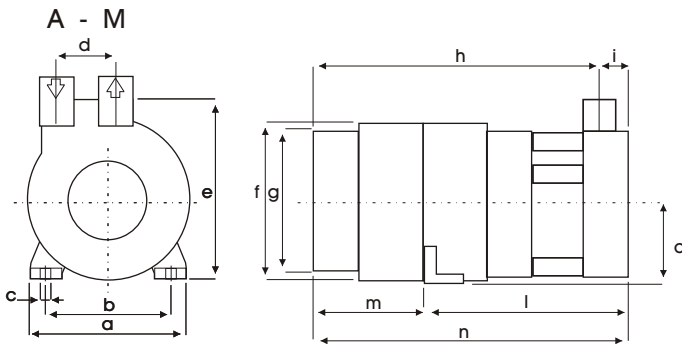


PPL 45

kW 0.30 Hm 30.0 max
Hp 0.40 L/1' 32.5 max

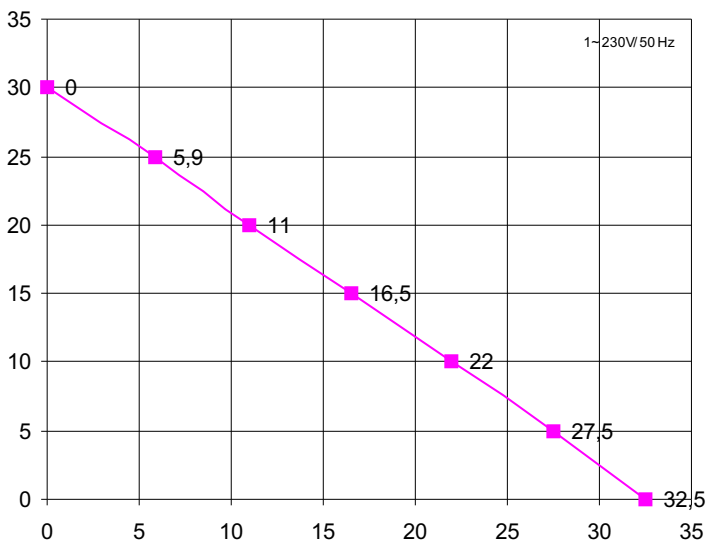


Corpo pompa Pump Body Pumpengehäuse	RYTON
Girante aperta Open Impeller Offenes Laufrad	NORYL 20 FV
Albero motore Motor Shaft Motorwelle	AISI 430 F
Tenuta meccanica Mechanical Seal Gleitringdichtung	GRAFITE/CERAMICA CARBON/CERAMIC KOHLE/KERAMIK



DX	A	M
	Ø 11,5	Ø 11,5

mod	a	b	c	d	e	f	g	h	i	l	m	n	o	p	q	r	kg
PPL 45	96	75	6,5	28	107	96	87	147	18	110	55	165	50	-	-	-	3,3



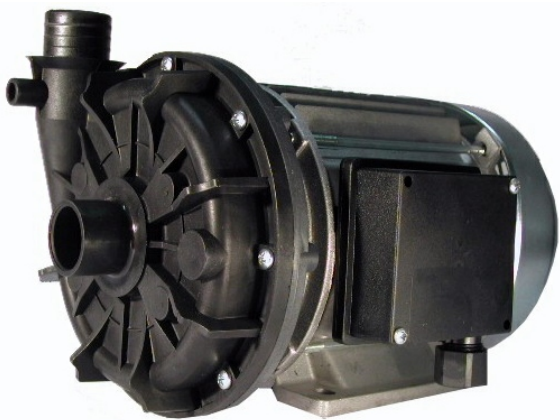
H m	0	5	10	15	20	25	30
L / 1'	32,5	27,5	22,0	16,5	11,0	5,9	0,0

Ci riserviamo il diritto di apportare modi fiche tecniche.
We reserve the right of technical modifications.
Technische Änderungen vorbehalten.

Potenza motore Motor power Motor Leistung	Hp	0,4	kW	0,3
Tensione/Frequenza Tension/Frequency Spannung/Frequenz	1~V/Hz 230/50			
Corrente assorbita Power consumption Stromaufnahme	A 1,72			
GPM RPM UPM	2800			
Condensatore Capacitor Kondensator	8 µF			
Protezione termica Thermal Overload Überlastschutz	155 °C			
Classe isolamento Insulation class Isolationsklasse	F			
Grado protezione Protection class Schutzklasse	IP 44			
Servizio Duty Betriebsart	S5	INTERMITTENTE INTERMITTANT KURZZEITIG		

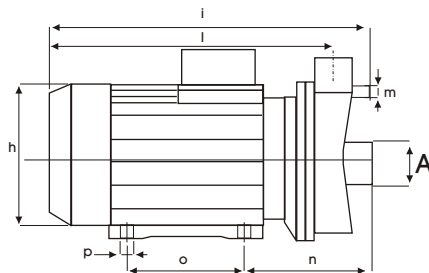
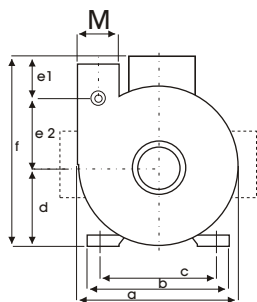


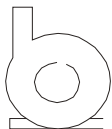
ZA215AP kW 0.69 Hm 21 max
Hp 0.954 L/1' 137 max



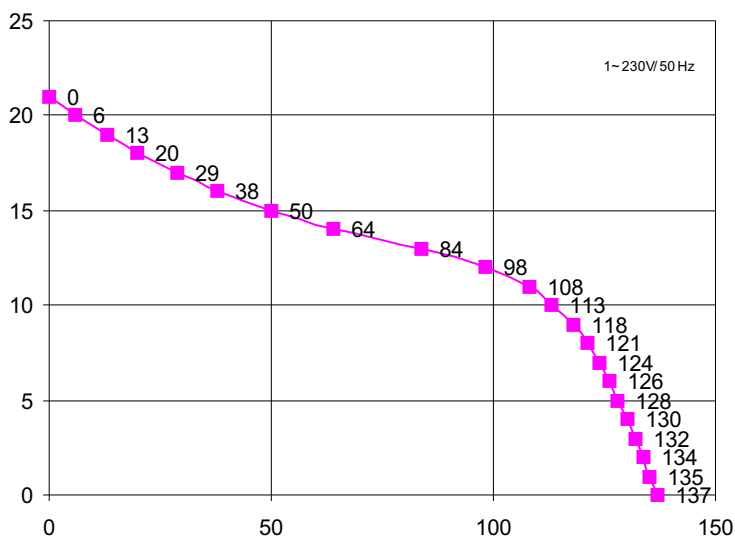
Corpo Pompa Pump Body Pumpengehäuse	PP30 FV / PPO 20 V
Girante Chiusa Closed Impeller Geschl. Laufrad	PPO 30GF
Albero Motore Motor Shaft Motorwelle	AISI 416
Tenuta Meccanica Mechanical Seal Gleitringdichtung	GRAFITE/CERAMICA CARBON/CERAMIC KOHLE/KERAMIK

1~ 230V / 50Hz art. n.



SX	A	M
 F3:	1"	1"

mod	a	b	c	d	e1	e2	f	g	h	i	l	m	n	o	p	kg
ZFP215AP	160	113	90	77	40	61	179	-	142	268	233	13	100	90	8	6,7



Hm	0	3	5	7	9	11	13	15	20	21
L / 1'	137	132	128	124	118	108	84	50	6	0

Potenza motore Motor power Motor Leistung	Hp kW	0,93 0,69
Tensione/Frequenza Tension/Frequency Spannung/Frequenz	1~V/Hz	230/50
Corrente assorbita Power consumption Stromaufnahme	A	3,28
GPM RPM UPM		2800
Condensatore Capacitor Kondensator		16 µF
Protezione termica Thermal Overload Überlastschutz		155 °C
Classe isolamento Insulation class Isolationsklasse		F
Grado protezione Protection class Schutzklasse		IP X5
Servizio Duty Betriebsart	S1	CONTINUO CONTINUOUS DAUERBETRIEB

REVISIONE N. 04/02/04 P.01/039

Ci riserviamo il diritto di apportare modifiche tecniche.
We reserve the right of technical modifications.
Technische Änderungen vorbehalten.



ELETTROPOMPE PER UTILIZZI PARTICOLARI

ELECTRIC PUMPS FOR SPECIAL APPLICATIONS

ELEKTROPUMPEN FÜR BESONDERE EINSÄTZE

*MINI-GRUPPI DI
SOLLEVAMENTO ACQUE LURIDE*

SMALL SEWAGE LIFTING PLANTS

KLEINHEBEANLAGEN



ZP 200

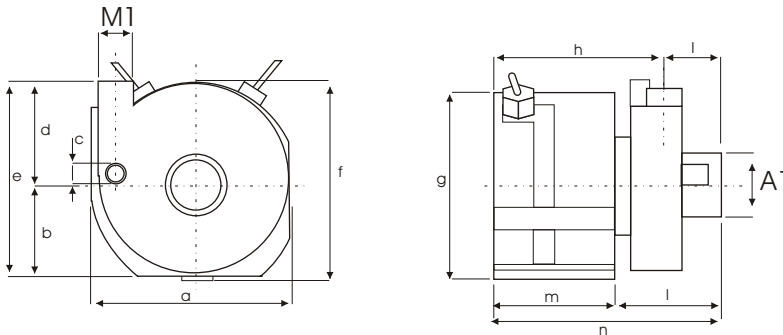
kW 0.54 Hm 5.5 max
Hp 0.72 L/1' 233 max



Pompa centrifuga speciale per piccoli impianti di sollevamento fognari.

Special centrifugal pump for small sewage boosting systems.

Kreiselpumpe für Kleinhebeanlagen.



Corpo pompa
Pump Body
Pumpengehäuse **PP 30 GF**

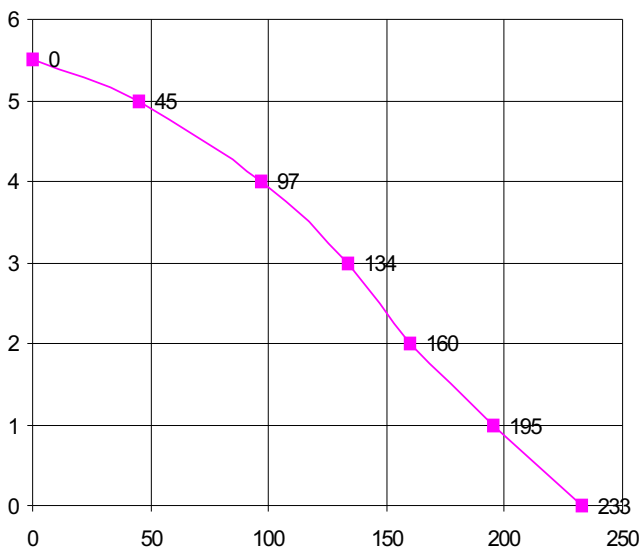
Girante Aperta
Open Impeller
with Knives
Offenes Laufrad
mit Messern **PPO 20GF**

Albero motore
Motor Shaft
Motorwelle **AISI 416**

Tenuta meccanica
Mechanical Seal
Gleitringdichtung **GRAFITE/CERAMICA**
CARBON/CERAMIC
KOHLE/KERAMIK

SX	A	M
	L13: 48	39

mod	a	b	c	d	e	f	g	h	i	l	m	n	o	p	q	r	kg
ZP 200	162	70	12	75	145	150	148	142	44	91	95	186	-	-	-	-	4,0



H m	0	1	2	3	4	5	5,5
L / 1'	233	195	160	134	97	45	0

Potenza motore
Motor power
Motor Leistung **Hp kW**
0,66 0,49

Tensione/Frequenza
Tension/Frequency
Spannung/Frequenz **1~V/Hz**
230/50

Corrente assorbita
Power consumption
Stromaufnahme **A**
2,54

GPM
RPM
UPM **2800**

Condensatore
Capacitor
Kondensator **10 µF**

Protezione termica
Thermal Overload
Überlastschutz **155 °C**

Classe isolamento
Insulation class
Isolationsklasse **F**

Grado protezione
Protection class
Schutzklasse **IP 55**

Servizio
Duty
Betriebsart **S6** **INTERMITTENTE**
INTERMITTANT
KURZZEITIG

Ci riserviamo il diritto di apportare modifiche tecniche

We reserve the right of technical modifications

Technische Änderungen vorbehalten

REVISIONE N.00.01/03 P36/02



MOTORI ELETTRICI PER APPLICAZIONI SPECIALI

ELECTRIC MOTORS FOR SPECIAL APPLICATIONS

ELEKTROMOTOREN FÜR BESONDERE EINSÄTZE



MOTORE ELETTRICO
ELECTRIC MOTOR
ELEKTRO MOTOR

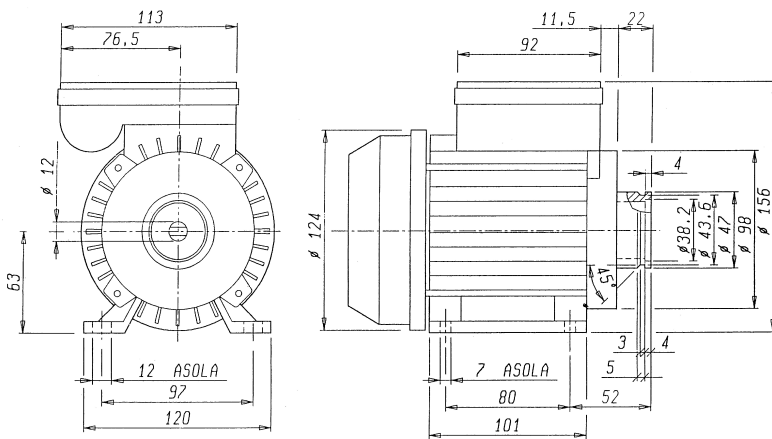
300 W



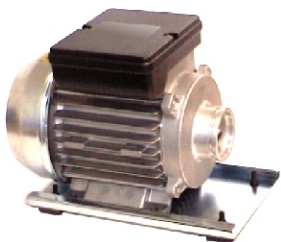
Motore elettrico a 4 poli (1450 g.p.m.) con potenza assorbita di 300 W, provvisto di scudo anteriore adatto all'accoppiamento con pompe volumetriche a palette. Esempi di applicazione sono macchine da caffè, impianti di osmosi inversa, distributori di bevande, sistemi di raffreddamento.

4 pole electric motor (1450 r.p.m.) with absorbed power of 300W, provided with a front shield suitable for coupling of volumetric pressure pumps. Examples of applications are coffee machines, inverse osmosis plants, drink distributors, cooling systems.

4 polige Elektromotoren (1450 U.p.M.) mit Aufnahmeleistung, mit Frontschild für Aufnahme von Paletten-Hochdruckpumpen. Anwendungsbeispiele sind Kaffeemaschinen, Umkehrosmose, Getränkespender, Kühlsysteme.



Potenza motore Motor power Motor Leistung	Hp	kW
	0,25	0,18
Tensione/Frequenza Tension/Frequency Spannung/Frequenz	1~V/Hz	
	230/50	
Corrente assorbita Power consumption Stromaufnahme	A	
	1,31	
GPM RPM UPM	1450	
Condensatore Motor Power Motor Leistung	6,5 µF	
Protezione termica Thermal Overload Überlastschutz	155 °C	
Classe isolamento Insulation class Isolationsklasse	I	
Grado protezione Protection class Schutzklasse	IP 44	
Servizio Duty Betriebsart	S1	CONTINUO CONTINUOS DAUERBETRIEB



A richiesta è disponibile una staffa antivibrante
On request an antivibration support is available
Eine schwingungsdämpfende Platte ist lieferbar



La versione 300M/W ha ingombri ridotti, con coprimorsettiera piatto e condensatore esterno.

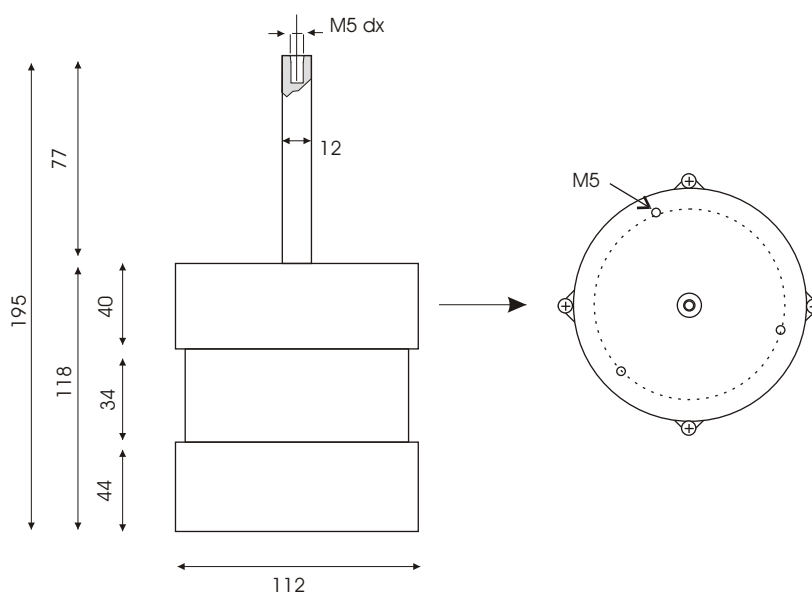
The version 300M/W has reduced dimensions, with flat connection box cover and external capacitor assembly.

Die Version 300M/W ist platzsparend, mit außen montiertem Kondensator und flacher Abdeckung.



MA71 TYP01

MOTORE ELETTRICO PER FORNI
ELECTRIC MOTOR FOR OVENS
ELEKTRO MOTOR FÜR BACKÖFEN



REVISIONE N.03.01/03

Disponibili tensioni e potenze su richiesta

Disponibili tensioni e potenze su richiesta

Andere Spannungen und Frequenzen lieferbar

Potenza motore Motor power Motor Leistung	Hp 0,33	kW 0,24
Tensione/Frequenza Tension/Frequency Spannung/Frequenz	1~V/Hz 230-/50	
Corrente assorbita Power consumption Stromaufnahme	A 1,36	
GPM RPM UPM	2800	
Condensatore Motor Power Motor Leistung	6,3 µF	
Protezione termica Thermal Overload Überlastschutz	155 °C	
Classe isolamento Insulation class Isolationsklasse	F	
Grado protezione Protection class Schutzklasse	IP 00	
Servizio Duty Betriebsart	S1	CONTINUO CONTINUOUS DAUERBETRIEB